

Inspec XL2 is the ideal way for any organization to reap the benefits of a state-of-the-art digital inspection and comparison system.

The Inspec XL2 camera-based inspection system leverages the newest imaging technology with our proven Inspec image comparison algorithm to produce a very detailed, high-resolution comparison image. The system will identify any differences between master and sample for the operator to examine and verify. Full reporting features are available to produce a summary of errors discovered and to catalog any errors detected by the system.

Inspec XL2 allows users to nearly instantly capture and compare images for detailed inspection. Using a high-framerate USB camera, Inspec XL provides a live comparison image in the form of a 'digital subtraction'. A locking X-Y table makes it easy for the operator to keep the inspected component in the center of the frame.

When used as part of your incoming materials inspection process, Inspec XL2 can greatly reduce the total time spent on each article while ensuring total accuracy and compliance with design specifications. Complete Systems start at under \$8,000 with leases starting under \$400 per month. Based on a 40 hour work week, that's about \$2.50 per hour to reduce your inspection time by 90%.

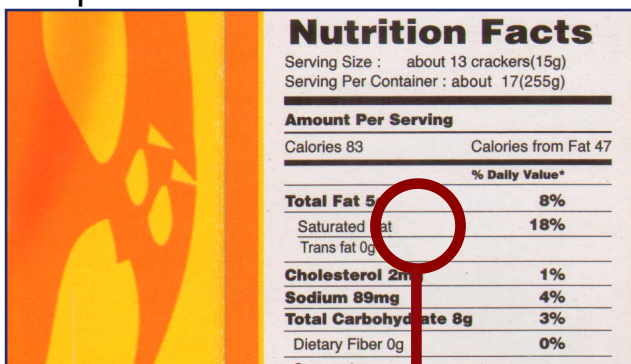
Inspect Incoming Materials

Can your inspector view 2,000,000 points on your package in one second?



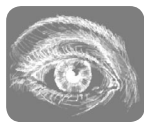
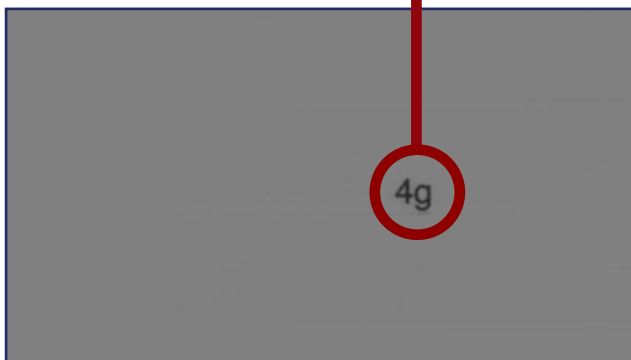
Master

Sample



Live Error Detection

Defects



2 Megapixel USB Camera
Live Image
High Framerate



Advanced Inspection Tools
Error Detection & Reporting
Fast & Efficient



Cost Effective
Scalable
Excellent Support