

Complete Inspection Systems, Inc.

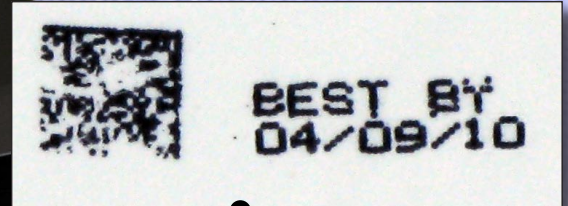
Q-Spec™

Track, Trace and Record Product Information

10.3 Megapixel Camera



Record Date and Lot Code



Measure Size



Detect and Read Barcodes

Barcode # 1
Barcode Type --> EAN 13
Barcode Value --> 0677891511344

Compare Colors

HTML: #DB4226 Dec: 2507483

Compare Incoming Materials to Master Document

Standard/Master		Sample/Copy		Defect/Differences	
Nutrition Facts		Nutrition Facts			
Serving Size : about 13 crackers(15g)		Serving Size : about 13 crackers(15g)			
Amount Per Serving		Amount Per Serving			
Calories from Fat 47		Calories from Fat 47			
% Daily Value*		% Daily Value*			
Fat 5g	8%	Fat 5g	8%		
Saturated Fat 4g	18%	Saturated Fat 4g	18%		
Trans fat 0g		Trans fat 0g			
Cholesterol 2mg	1%	Cholesterol 2mg	1%		

Q-Spec™

Image and Document Incoming and Finished Goods

*...quickly
spot errors
in copy
or image
composition*

The Q-Spec™ System is an all-in-one solution for the inspection of incoming and finished goods. Our software suite brings a variety of important quality assurance activities under one roof.

Capture and Catalog Images

Capture a high-resolution image of the product using the built-in 10.3 megapixel camera. The Q-Spec™ lightbox assures uniform, shadowless lighting on every image.

Record Product Information

Maintain detailed records of all incoming or finished products. Use our powerful software to search or sort by date, lot code, bar code, or any other attribute. Fields are fully customizable.

Automatically Proofread

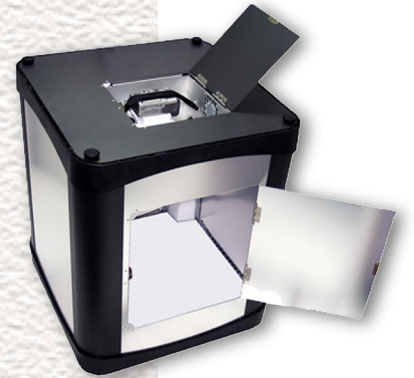
Use Complete Inspection System's industry-leading digital proofreading software to quickly spot errors in copy or image composition. Compare a master image to a sample label, block of text, or illustration.

Detect and Read Barcodes

Detect and read barcodes, including two-dimensional data matrices. Automatically record barcode values and use them to sort product records

Digitally Measure and Verify Color

Ensure a sample of incoming material meets specifications. Measure the size of an incoming object digitally, or compare colors with a master Pantone swatch. The imaging workstation provides identical lighting for each test



*The Q-Spec™
lightbox
assures
uniform,
shadowless
lighting on
every image.*

Technical Specifications:

Hardware:

System Model: Dell Precision 390

Processor: Dual 1.87 GHz Core 2
2MB L2 Cache

Storage: (2) 160 GB Hard Disks

Memory: 2 GB SDRAM

Backup: DVD/CD ±RW

Graphics: nVidia Quadro FX 550

Monitor: 21" Dell 2007FP Monitor

Network: Broadcom 10/100 Ethernet Controller

Software:

Windows XP (SP2)

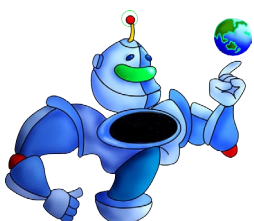
MS Office 2003

Q-Spec™ Software Suite

Peripherals:

Q-Spec™ Imaging Workstation

Canon 10.3-Megapixel Camera



334 Fourth Avenue
Indialantic, Florida 32903
United States

Phone: (321)952 2490
Fax: (321)952 2475

Complete Inspection Systems, Inc.

sales@completeinspectionssystem.com
www.completeinspectionssystem.com